

Your Trusted Partner

Specializing in Electro- Mechanical System Design, Execution & Servicing

# ABOUT US

MCS Middle East Electromechanical Works LLC is the international extension branch of MCS India Limited. MCS India Limited was established in the year 2008 as an air conditioning company and later became a Limited Company in 2022. We started as a General Contracting Firm with our expertise in HVAC. And now we have expanded our business in providing complete MEP Services under one roof. The initial goal of the company is to provide all solutions for plumbing, firefighting, electrical services including internal & external electrification covering the distribution, low voltage system, HT & LT works, panels & transformers.

Our aim is to provide the most supreme quality, customer-focused and cost-effective MEP service solutions by understanding the needs of our clients. Our highly professional team of engineers, designers, supervisors, technicians etc. have a deep understanding of the turnkey works industry & advance technology to help the client/customer with their project needs. MCS Group as a result of the continued support received from our clients and best customer service enabling us to serve across the nation as a whole. We have a team of 100+ employees, including commissioning and service technicians, having the experience and expertise to successful execution of all types of commercial, industrial & residential projects. We have completed 200+ projects in a time span of two decades. Our client list consists of renowned government and private projects



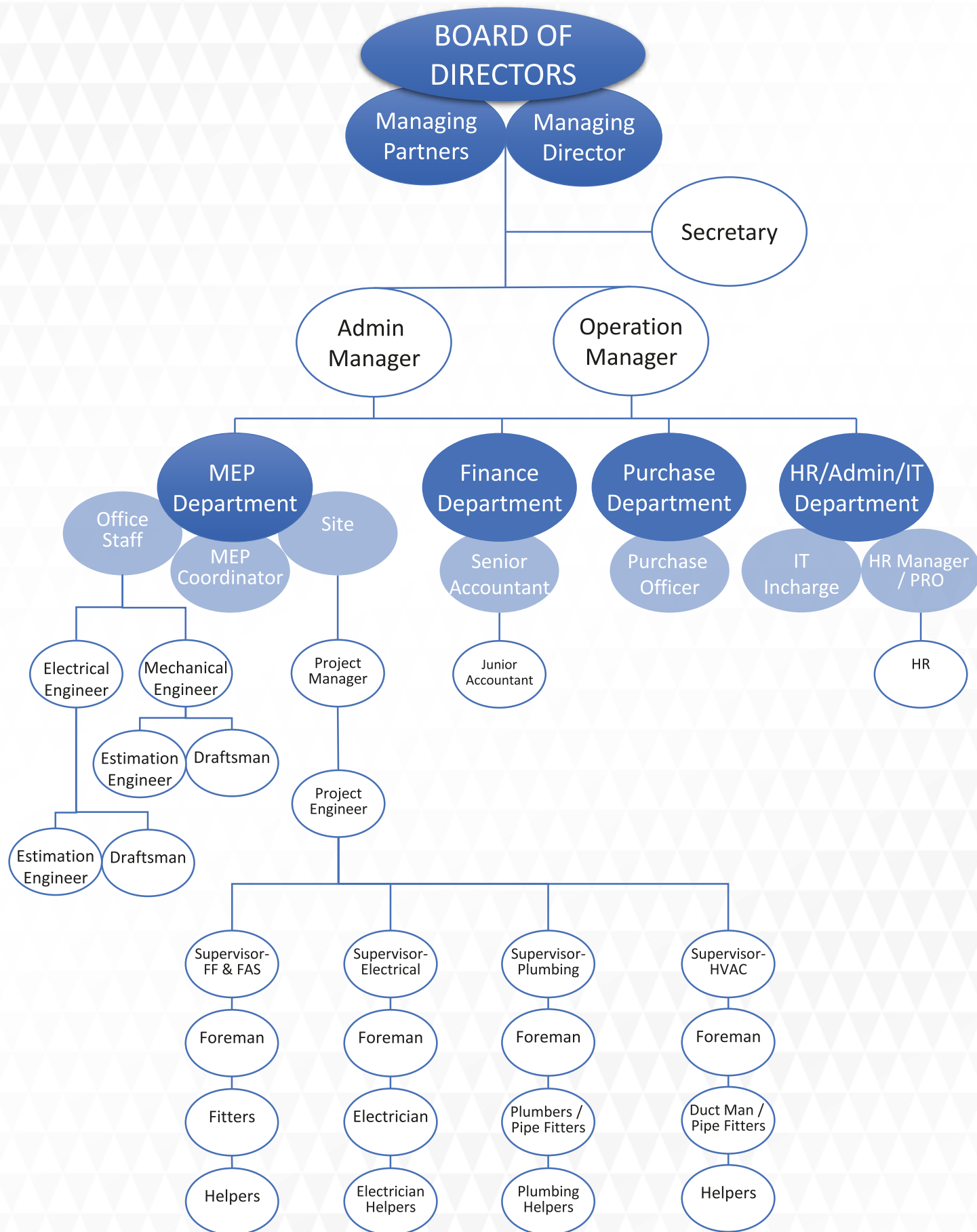
**MANISH KUMAR**  
MANAGING DIRECTOR

## OUR MISSION & VISION

Our vision is to become the most trusted and reliable partner for complete Electromechanical solutions contracting company in entire Middle East area. We at MCS recognize that high standards of health, safety and environmental protection are integral for the growth of the organization and its people. We are committed to providing a safe and healthy workplace for all employees and preventing untoward incidents/accidents, injury and ill health of any employee, contractor and any other relevant stake holder. We are dedicated in taking adequate measures to protect the environmental pollution. Safety training & use of PPE is mandatory in project sites.

Our Mission is to provide ultimate customer satisfaction with result oriented and process driven services. We strive constantly to keep ourselves informed of the latest technologies and modern developments to be able to provide the best services in the market.







# OUR VALUE



## INTEGRITY

We strive to practice the highest standards of honesty, truthfulness, reliability and fairness in every aspect of our work in all our business relationship.



## TEAMWORK

We respect the ideas and opinions of others and share knowledge and support among each other in company's goal to achieve excellence



## HONESTY

We are truthful, accurate and forthcoming in our dealings with fellow employees, customers, clients, vendors and suppliers, agencies and general public.



## EXCELLENCE

We are continuously improving our service quality, safety innovation and standards to ensure that we deliver our best workmanship, construction practices and services are the best in the marketplace.



## CORPORATE CITIZENSHIP

We will be good corporate citizens by making social responsibility, accountability and respect for the law, economy, environment, society and integral part of our business activities and relationship, while creating value of our clients and communities we work for.

# OUR SERVICE AREAS



## WHY CHOOSE US

WE LISTEN  
WE UNDERSTAND  
WE ANALYZE  
WE DISCUSS SOLUTIONS  
WE EXECUTE  
WE TAKE FEEDBACKS

# CLIENT SATISFACTION





# COMMITTED TO HEALTH & SAFETY

We at MCS recognize that high standards of health, safety, and environmental protection are integral for the growth of the organization and its people. We are committed to providing a safe & healthy workplace for all employees and preventing unwanted incidents/accidents, injury, and ill health of any employees, contractors, and other relevant stakeholders. We dedicately take adequate measures to protect the environment and prevent environmental pollution. Safety training & use of PPE is mandatory in all our project sites.

## HSE SYSTEM

Safety induction and medical test for all new employees, daily toolboxes talk & safety trainings before deploying at site; third party inspections, monthly joint safety inspection of mechanical and electrical equipment, documentation & Work Permit System, mock drill and emergency preparedness plan, weekly & monthly safety walk with our working partners, welfare activities and safety promotional activities.



**HEALTH**



**SAFETY**



**ENVIRONMENT**

# OUR ONGOING PROJECTS - INDIA

## PROJECT: LNJP HOSPITAL

Nature of Work:- Supply, Installation, Testing & Commissioning of HVAC Work



## PROJECT: SAMASTIPUR MEDICAL COLLEGE & HOSPITAL

Nature of Work:- Supply, Installation, Testing & Commissioning of HVAC Work  
Supply, Installation, Testing & Commissioning of ELECTRICAL Work  
Supply, Installation, Testing & Commissioning of PLUMBING Work  
Supply, Installation, Testing & Commissioning of FIRE Work

# OUR ONGOING PROJECTS - INDIA

## **PROJECT: BODHGAYA STATE GUEST HOUSE BIHAR**

Nature of Work:- Supply, Installation, Testing & Commissioning of HVAC Work



## **PROJECT: SURGICAL BLOCK DMCH HOSPITAL DARBHANGA BIHAR**

Nature of Work:- Supply, Installation, Testing & Commissioning of HVAC Work  
Supply, Installation, Testing & Commissioning of ELECTRICAL Work  
Supply, Installation, Testing & Commissioning of PLUMBING Work  
Supply, Installation, Testing & Commissioning of FIRE Work



# OUR ONGOING PROJECTS - INDIA

## **PROJECT: CHHAPRA MEDICAL COLLEGE & HOSPITAL**

Nature of Work:- Supply, Installation, Testing & Commissioning of HVAC Work  
Supply, Installation, Testing & Commissioning of BMS Work



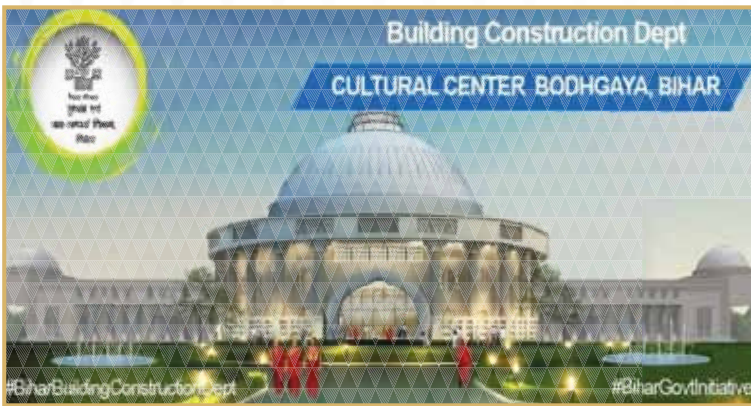
## **PROJECT: KOILWAR MENTAL HOSPITAL**

Nature of Work:- Supply, Installation, Testing & Commissioning of HVAC Work  
Supply, Installation, Testing & Commissioning of BMS Work

# OUR ONGOING PROJECTS - INDIA

## PROJECT: CULTURAL CENTRAL BODHGAYA

Nature of Work:- Supply, Installation, Testing & Commissioning of HVAC Work  
Supply, Installation, Testing & Commissioning of BMS Work



## PROJECT: NALANDA DENTAL COLLEGE

Nature of Work:- Supply, Installation, Testing & Commissioning of HVAC Work  
Supply, Installation, Testing & Commissioning of BMS Work



# OUR ONGOING PROJECTS - INDIA

## PROJECT: DLF GARDEN CITY SECTOR 93

Nature of Work: Electrical works





# OUR UAE PROJECTS

## **PROJECT: JUBAIL ISLAND, ABU DHABI - VILLA PROJECT**

Nature of Work: HVAC, Electrical & Plumbing (Roof)





# OUR PROJECTS

PARIVAHAN PARISAR PATNA	2.40 Cr.	HVAC
MENTAL HEALTH HOSPITAL KOILWAR	6.29 Cr.	HVAC
MAHABODI CULTURAL CENTRE BODHGAYA	6.65 Cr.	HVAC
SWASTHYA BHAWAN PATNA BIHAR	5.4 Cr.	HVAC
GOVT DENTAL COLLEGE & HOSPITAL NALANDA	12 Cr.	HVAC & FF
PATNA AIRPORT PATNA BIHAR	3.2 Cr.	HVAC
L.N.J.P. HOSPITAL BIHAR	2.50 Cr.	HVAC
S.K.M.C.H. MUZAFFARPUR BIHAR	3.35 Cr.	HVAC
IIIT SMART CAMPUS RANCHI	10 Cr.	ELECTRICAL
GOVERNMENT MEDICAL COLLEGE & HOSPITAL CHHAPRA	18 Cr.	MEP
GOVERNMENT MEDICAL COLLEGE & HOSPITAL MAHUA	32 Cr.	MEP
SHRI RAM JANKI MEDICAL COLLEGE NARGHOGI SAMASTIPUR	18.62 Cr.	MEP
STATE GUEST HOUSE BODHGAYA	6.5 Cr.	HVAC
D.M.C.H. SURGICAL BLOCK, DARBHANGA	18 Cr.	HVAC & ELECTRICAL
NIT PATNA (EXTENSION OF NIT PATNA)	10.8 Cr	HVAC
SUB DIVISION, HOSPITAL SASARAM	1.8 Cr.	HVAC
SUB DIVISION, HOSPITAL KHAGARIA	1.2 Cr.	HVAC
SUB DIVISION HOSPITAL, SAMASTIPUR	6 Cr.	ELECTRICAL
DLF SECTOR 93 GURUGRAM	5.06 Cr.	ELECTRICAL
DLF PANCHKULA	5.40 Cr.	ELECTRICAL





## OUR PROJECT IN PIPELINE

SWAMI VIVEKANANDRAJKIYA COLLEGE, NIMBAHERA	13.6 Cr.	ELECTRICAL
RESIDENT BUILDING FOR PAC MAHILA BATALION, BADAUN	10.50 Cr.	ELECTRICAL
MIL HISSAR	5.99 Cr.	ELECTRICAL & PLUMBING
FARM HOUSE, SONIPAT	2.00 Cr.	MEP
MEDICAL COLLEGE PITTORGARH	119.00 Cr	MEP
GMR GNXE PROJECT, DELHI	0.60 Cr	FAS & EVAC
UAE-JUBAIL ISLANDS VILLA PROJECT ABU DHABI	ONGOING	HVAC , ELECTRICAL & PLUMBING

## LAST FIVE YEARS COMPLETED PROJECTS

JUIDCO, RANCHI	8.2 Cr.	HVAC & BMS
NIT PATNA	9.94 Cr	HVAC
BODHGAYA CULTURAL CENTRE	4.75 Cr.	HVAC & ELECTRICAL
LNJP HOSPITAL GOV OF BIHAR	2.7 Cr.	HVAC
MUZAFFARPUR PAEDIATRIC HOSPITAL	2.5 Cr.	HVAC
PATNA AIRPORT PHASE I & II	3.4 Cr	HVAC
PARIVAHAN PARISAR	2.40 Cr.	HVAC



# SITE GLIMPSE OF HVAC WORK



# SITE GLIMPSE OF PLUMBING & FIRE FIGHTING WORK





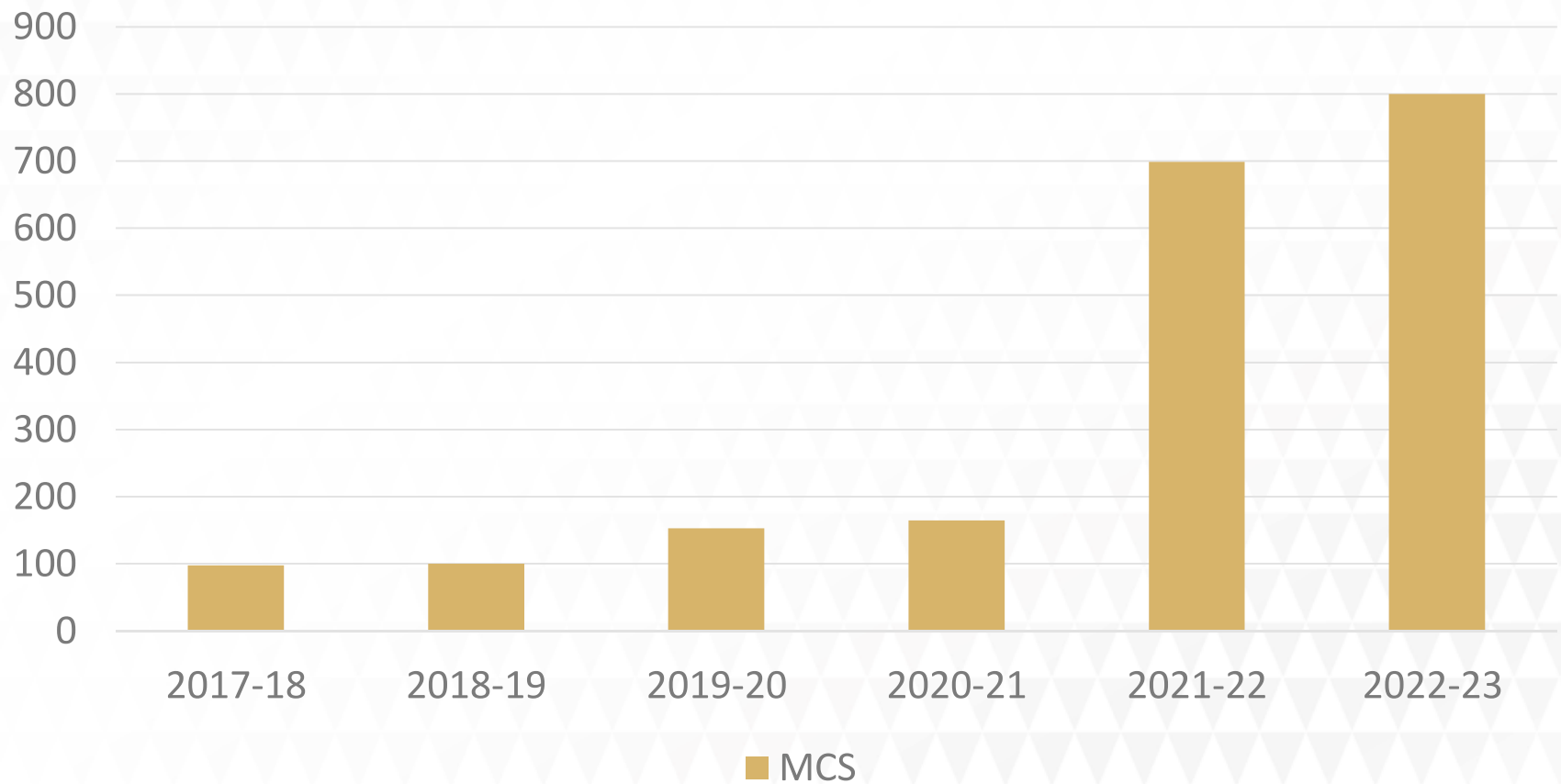
# SITE GLIMPSE OF ELECTRICAL WORK





# LAST SIX YEARS TURN OVER

In Millions



## OUR CERTIFICATES



# Introduction to our Extra-Low-Voltage Services

Providing cutting-edge technologies solutions for all your low voltage needs



## What are Extra-Low-Voltage Services?

A range of services that operate on low electrical currents to power various system



## Advantages of Extra-Low-Voltage Systems

Enhanced safety, energy efficiency, and cost-effectiveness



## Applications of Extra-Low-Voltage Services

Security systems, fire alarms, telecommunications, and more

## Why Extra-Low Voltage Services are Essential in Today's Market

Stay ahead with the latest low voltage solutions



### Growing Demand for Smart Buildings

Integration of IoT devices and automation systems



### Energy Efficiency and Cost Savings

Reduce energy consumption & operational expenses



### Enhanced Safety and Security

Robust surveillance, access control, and emergency response systems





# Target Audience Analysis for our Extra-Low-Voltage Services

Understanding our customers to deliver tailored solutions



## Commercial Sector

Office building, retail stores, hotels and healthcare facilities



## Residential Sector

Apartment complexes, gated communities, and smart homes



## Industrial Sector

Manufacturing Plants, warehouse, and distribution centers

## Key Features and Benefits of Our Extra-Low-Voltage Services

The advantages of choosing our services



### Cutting-Edge Technology

Innovative solutions designed for optimal performance



### Reliable and Scalable Systems

Efficient systems that can adapt to changing needs



### Customized Solutions

Tailored services to meet specific requirement



### 24/7 Support and Maintenance

Dedicated team ensuring smooth operation



B/1005, DAMAC Executive Bay Towers,  
Business Bay, Dubai United Arab Emirates  
Contact no:- + 971 47702323  
Email: [info@mcsmiddleeast.com](mailto:info@mcsmiddleeast.com)  
Website: [www.mcsmiddleeast.com](http://www.mcsmiddleeast.com)



## HEAD OFFICE - INDIA

604, Veritas Tower, Golf Course Road DLF Phase 5  
Sector 53, Gurugram, Haryana - 122003  
Contact no:- +91 124 4268596  
Email: [info@mcsindia.co.in](mailto:info@mcsindia.co.in)  
Website: [www.mcsindia.co.in](http://www.mcsindia.co.in)

## BRANCH OFFICE

Shop No: 12. Braj Laxmi Mansion, Shadeo Mahato  
Marg Boring Road Patna Bihar - 800001  
Email: [info@mcsindia.co.in](mailto:info@mcsindia.co.in)  
Website: [www.mcsindia.co.in](http://www.mcsindia.co.in)

